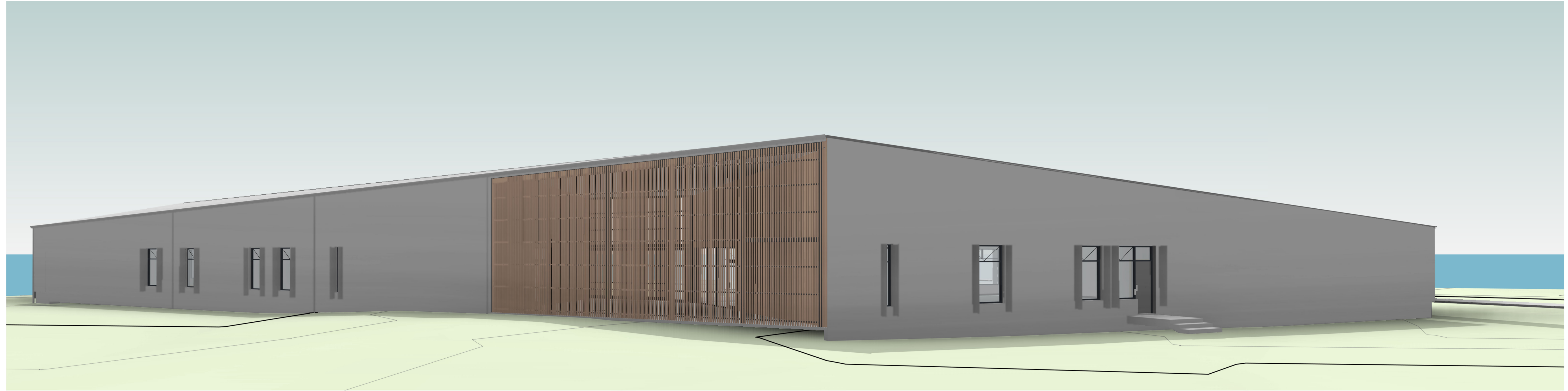


# UNIVERSITY OF TASMANIA BAND ROOMS

THE DISTANCE BETWEEN THESE MARKS SHOULD MEASURE AS 100mm WHEN SHEET IS PRINTED TO SCALE AS INDICATED



WEST PARK BAND ROOMS, BURNIE - DA				
SHEET No.	SHEET NAME	REV	DATE	DESCRIPTION
DA00	COVER SHEET	5	18 02 2022	AMENDED DEVELOPMENT APPLICATION
DA01	LOCATION	5	18 02 2022	AMENDED DEVELOPMENT APPLICATION
DA02	SITE PLAN	5	18 02 2022	AMENDED DEVELOPMENT APPLICATION
DA03	DEMOLITION PLAN	5	18 02 2022	AMENDED DEVELOPMENT APPLICATION
DA04	FLOOR PLAN	5	18 02 2022	AMENDED DEVELOPMENT APPLICATION
DA05	ELEVATIONS - SHEET 1	5	18 02 2022	AMENDED DEVELOPMENT APPLICATION
DA06	ELEVATIONS - SHEET 2	5	18 02 2022	AMENDED DEVELOPMENT APPLICATION
DA07	SECTIONS	5	18 02 2022	AMENDED DEVELOPMENT APPLICATION

## AREA SCHEDULE

BRASS BAND GFA	371m <sup>2</sup>
PIPE BAND GFA	274m <sup>2</sup>
UNDERCOVER GFA	80m <sup>2</sup>

**PhilpLighton Architects**

65 Tamar Street, Launceston, Tasmania 7250  
 T +61 (3) 6331 2133  
 launceston@philplighton.com.au  
 Hobart / Launceston

Accredited Designer: Andrew Floyd CC 43 47 D

Rev	Description	Dwn	Date
1	DEVELOPMENT APPLICATION	KY	11-11-20
2	DEVELOPMENT APPLICATION	KY	17-11-20
3	DEVELOPMENT APPLICATION	KY	18-11-20
4	DA CLARIFICATIONS	KY	15-12-20
5	AMENDED DEVELOPMENT APPLICATION	SS	18 02 2022

Contractor shall verify all dimensions on site before commencing any work or shop drawings.  
 © This drawing is copyright and remains the property of Philp Lighton Architects Pty Ltd

Project  
**UNIVERSITY OF TASMANIA  
 BAND ROOMS  
 WEST PARK, BURNIE, TAS, 7320**

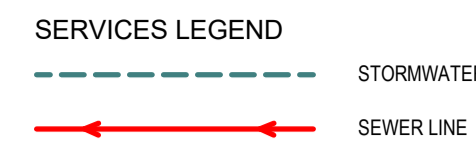
Title  
**COVER SHEET**

Issue  
**AMENDED DA**

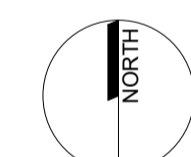
Drawn by	SS	Appr	TF	Project Number
Scale		Date	18 02 2022	<b>18.314</b>
Drawing No	<b>DA00</b>	Rev	<b>5</b>	

B:\18\2022\UTAS Band Rooms\18.314 UTAS BAND ROOMS\_CLOUD MODEL\_1.rvt  
 20/02/2022 10:02:54 AM

THE DISTANCE BETWEEN THESE MARKS SHOULD MEASURE AS 100mm WHEN SHEET IS PRINTED TO SCALE AS INDICATED



- LP LIGHT POLE
- DP DOWNPIPE
- MF-01 BOLLARD - REFER TO CIVIL DRAWINGS
- CF-01 CONCRETE PATH
- EXG EXISTING
- FSL FINISHED SURFACE LEVEL
- STW STORMWATER PIT
- SEW SEWER MAN HOLE
  
- eFSL EXISTING FINISHED SURFACE LEVEL
- fSL PROPOSED FINISHED SURFACE LEVEL



**PhilpLighton Architects**

65 Tamar Street, Launceston, Tasmania 7250  
 T +61 (3) 6331 2133  
 launceston@philplighton.com.au  
 Hobart / Launceston

Accredited Designer: Andrew Floyd CC 43 47 D

Rev	Description	Dwn	Date
1	DEVELOPMENT APPLICATION	KY	11-11-20
2	DEVELOPMENT APPLICATION	KY	17-11-20
3	DEVELOPMENT APPLICATION	KY	18-11-20
4	DA CLARIFICATIONS	KY	15-12-20
5	AMENDED DEVELOPMENT APPLICATION	SS	18 02 2022

Contractor shall verify all dimensions on site before commencing any work or shop drawings.  
 © This drawing is copyright and remains the property of Philp Lighton Architects Pty Ltd

Project  
**UNIVERSITY OF TASMANIA  
 BAND ROOMS  
 WEST PARK, BURNIE, TAS, 7320**

Title  
**LOCATION**

Issue  
**TENDER**

Drawn by	JC	Appr	TF	Project Number
Scale		Date	18 02 2022	<b>18.314</b>
Drawing No	<b>DA01</b>	Rev		<b>5</b>

B:\1802\UTAS Band Rooms\18.314 UTAS BAND ROOMS\_CLOUD MODEL\_1.rvt 20/02/2022 10:54:46



THE DISTANCE BETWEEN THESE MARKS SHOULD MEASURE AS 100mm WHEN SHEET IS PRINTED TO SCALE AS INDICATED

BASS STRAIT

EXIST HEADWALL

GREEN LINE INDICATES FUTURE CARPARK (NOT PART OF THIS AMENDED DEVELOPMENT APPLICATION)

NEW CONC PATH (SEPARATE CONTRACT)

NEW CAR PARK (SEPARATE CONTRACT)

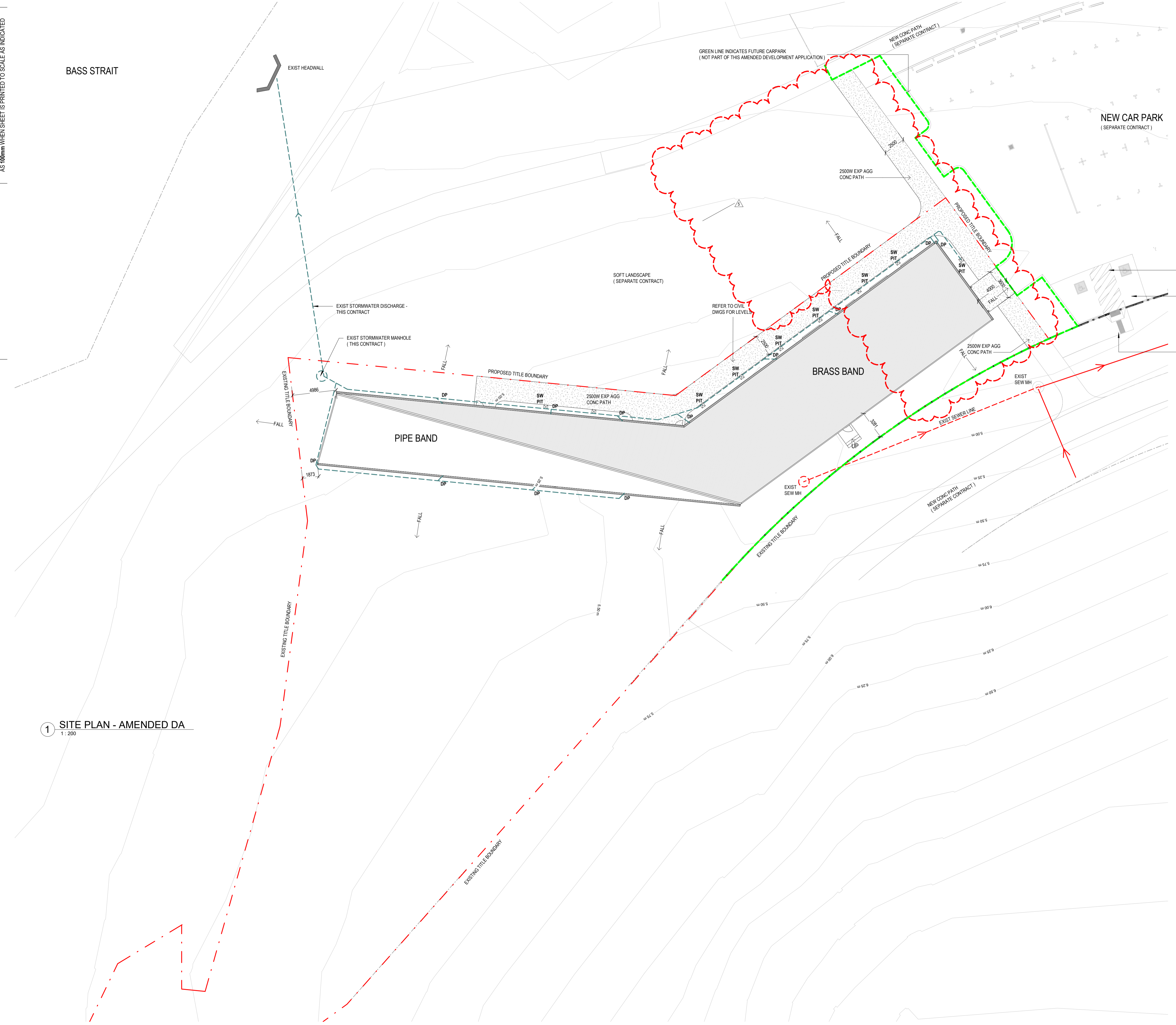
- LP LIGHT POLE
- DP DOWNPIPE
- MF-01 BOLLARD - REFER TO CIVIL DRAWINGS
- CF-01 CONCRETE PATH
- EXG EXISTING
- FSL FINISHED SURFACE LEVEL
- STW STORMWATER PIT
- SEW SEWER MAN HOLE
- eFSL EXISTING FINISHED SURFACE LEVEL
- FSL PROPOSED FINISHED SURFACE LEVEL

- BOUNDARY - BOUNDARY TO BE CONFIRMED WITH UTAS / BCC
- PRIMARY CONTOURS - 1 METRE INTERVALS
- SECONDARY CONTOURS - 250mm INTERVALS

SHARED ZONE WITH BOLLARD INSTALLED AS PER AS2890.6 (SEPARATE CONTRACT)

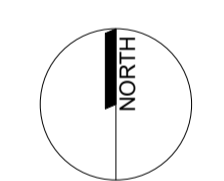
PROVIDE 2 DDA CAR PARKING SPACES WITH SHARED ZONE 5400 X 2600 NOMINAL AS PER AS2890.6 - WHEEL STOPS IN ACCORDANCE WITH AS 2890 (SEPARATE CONTRACT)

NEW KERB RAMP & TACTILES TO AS 1428 (SEPARATE CONTRACT)



# 1 SITE PLAN - AMENDED DA

1:200



PhilpLighton Architects

65 Tamar Street, Launceston, Tasmania 7250  
T +61 (0) 8331 2133  
launceston@philplighton.com.au  
Hobart / Launceston

Accredited Designer: Andrew Floyd CC 43 47 D

Rev	Description	Dwn	Date
1	DEVELOPMENT APPLICATION	KY	11-11-20
2	DEVELOPMENT APPLICATION	KY	17-11-20
3	DEVELOPMENT APPLICATION	KY	18-11-20
4	DA CLARIFICATIONS	KY	15-12-20
5	AMENDED DEVELOPMENT APPLICATION	SS	18 02 2022

Contractor shall verify all dimensions on site before commencing any work or shop drawings.  
© This drawing is copyright and remains the property of Philp Lighton Architects Pty Ltd

Project  
**UNIVERSITY OF TASMANIA**  
BAND ROOMS  
WEST PARK, BURNIE, TAS, 7320

Title  
**SITE PLAN**

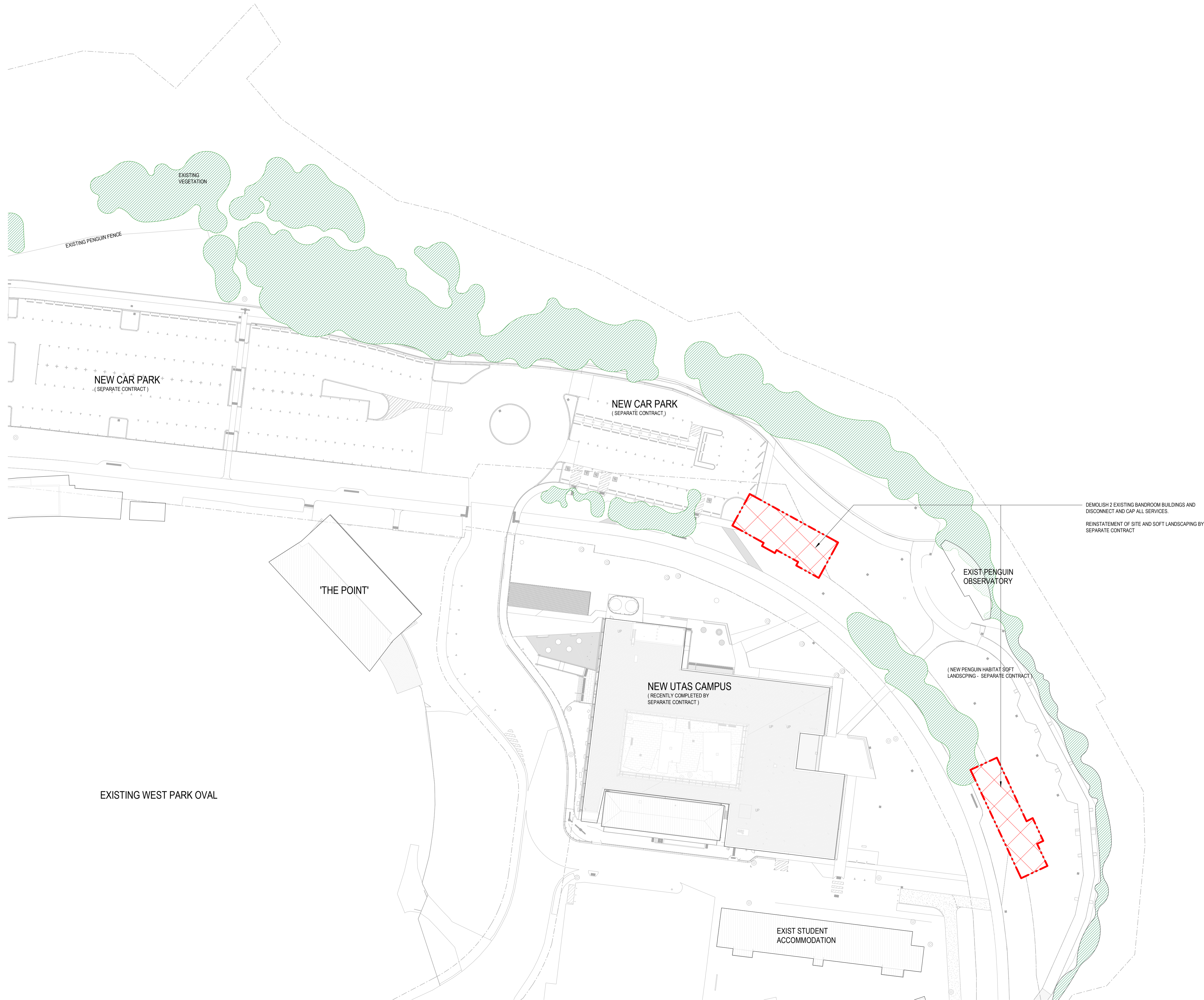
Issue  
**AMENDED DA**

Drawn by	SS	Appr	TF	Project Number
Scale	As indicated @ A1	Date	18 02 2022	<b>18.314</b>
Drawing No	<b>DA02</b>	Rev	<b>5</b>	

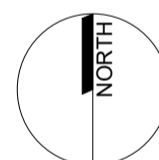
B:\1802\UTAS Burnie\Rooms\18.314 UTAS BAND ROOMS\_CLOUD MODEL\_1.rvt 20/02/2022 10:02:54 AM



THE DISTANCE BETWEEN THESE MARKS SHOULD MEASURE AS 100mm WHEN SHEET IS PRINTED TO SCALE AS INDICATED



DEMOLISH 2 EXISTING BANDROOM BUILDINGS AND DISCONNECT AND CAP ALL SERVICES.  
REINSTATEMENT OF SITE AND SOFT LANDSCAPING BY SEPARATE CONTRACT



**PhilpLighton Architects**

65 Tamar Street, Launceston, Tasmania 7250  
T +61 (0) 6331 2133  
launceston@philplighton.com.au  
Hobart / Launceston  
Accredited Designer: Andrew Floyd CC 43 47 D

Rev	Description	Dwn	Date
1	DEVELOPMENT APPLICATION	KY	11-11-20
2	DEVELOPMENT APPLICATION	KY	17-11-20
3	DEVELOPMENT APPLICATION	KY	18-11-20
4	DA CLARIFICATIONS	KY	15-12-20
5	AMENDED DEVELOPMENT APPLICATION	SS	18 02 2022

Contractor shall verify all dimensions on site before commencing any work or shop drawings.  
© This drawing is copyright and remains the property of Philp Lighton Architects Pty Ltd

Project  
**UNIVERSITY OF TASMANIA  
BAND ROOMS  
WEST PARK, BURNIE, TAS, 7320**

Title  
**DEMOLITION PLAN**

Issue  
**AMENDED DA**

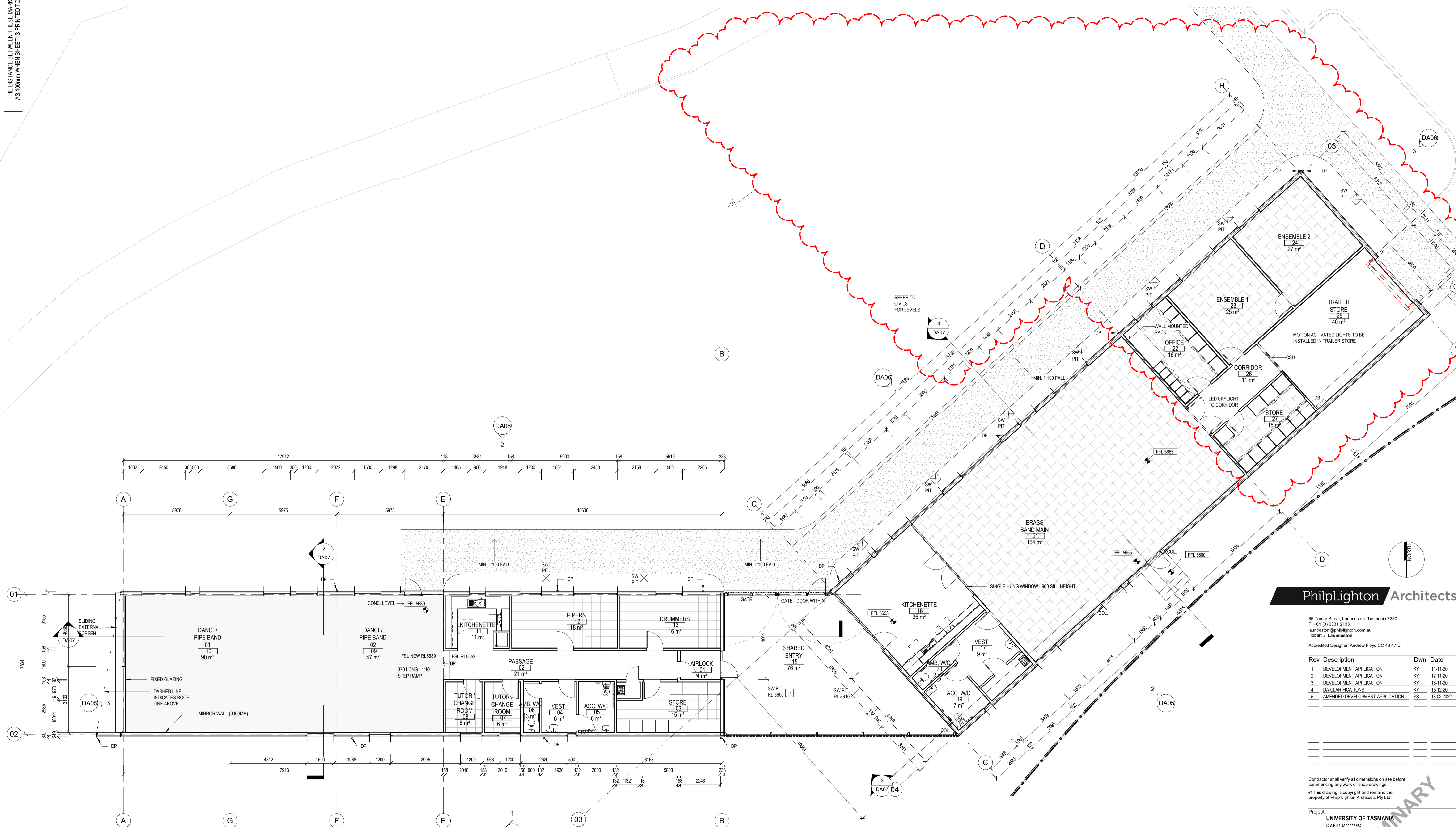
Drawn by	Author	Appr	Approver	Project Number
Scale		Date		<b>18.314</b>
		18 02 2022		

Drawing No	Rev
<b>DA03</b>	<b>5</b>

B:\180220\UTAS Band Rooms\18.314 UTAS BAND ROOMS\_CLOUD MODEL\_1.rvt  
20/02/2022 10:02:54 PM



THE DISTANCE BETWEEN THESE MARKS SHOULD MEASURE AS 100mm WHEN SHEET IS PRINTED TO SCALE AS INDICATED



1 FLOOR PLAN L00 - DA  
1:100

**PhilpLighton Architects**

65 Tamar Street, Launceston, Tasmania 7250  
T +61 (0) 6331 2133  
launceston@philplighton.com.au  
Hobart / Launceston  
Accredited Designer: Andrew Floyd CC 43 47 D

Rev	Description	Dwn	Date
1	DEVELOPMENT APPLICATION	KY	11-11-20
2	DEVELOPMENT APPLICATION	KY	17-11-20
3	DEVELOPMENT APPLICATION	KY	18-11-20
4	DA CLARIFICATIONS	KY	15-12-20
5	AMENDED DEVELOPMENT APPLICATION	SS	18-02-2022

Contractor shall verify all dimensions on site before commencing any work or shop drawings.  
© This drawing is copyright and remains the property of Philp Lighton Architects Pty Ltd

Project  
**UNIVERSITY OF TASMANIA  
BAND ROOMS  
WEST PARK, BURNIE, TAS, 7320**

Title  
**FLOOR PLAN**

Issue  
**AMENDED DA**

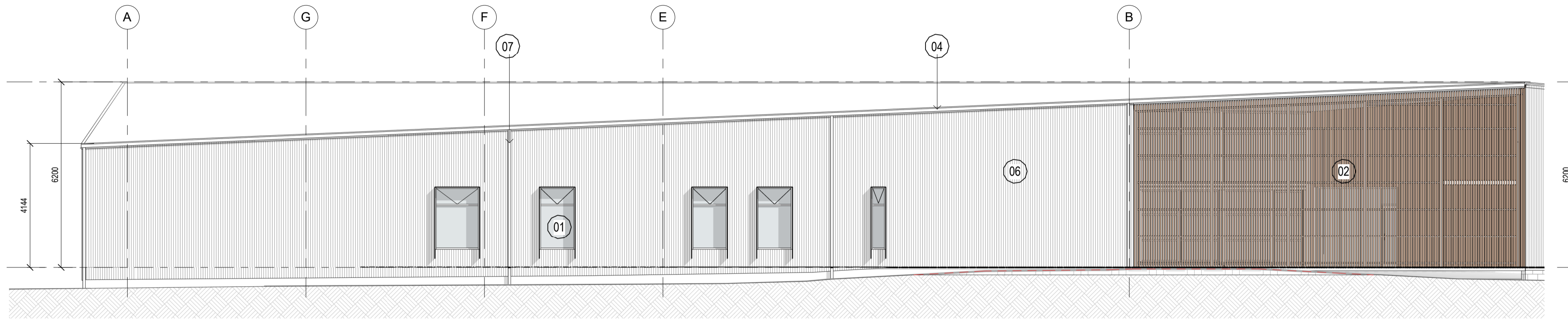
Drawn by	SS	Appr	TF	Project Number
Scale	1:100 @ A1	Date	18-02-2022	18.314
Drawing No	DA04	Rev	5	

PRELIMINARY

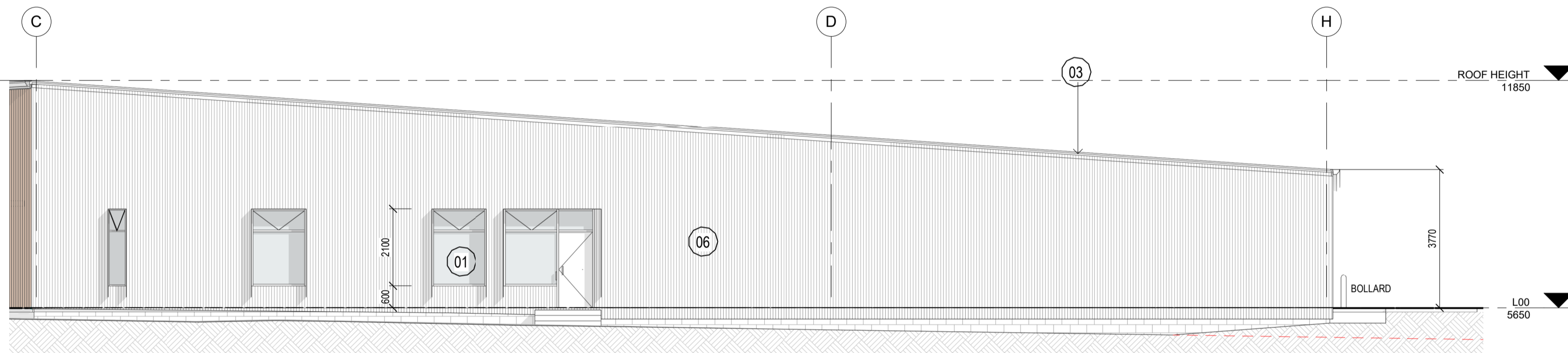
B:\00\00\UTAS Band Rooms\18.314\UTAS BAND ROOMS\_CLOUD MODEL.rvt  
18/02/2022 10:10:46



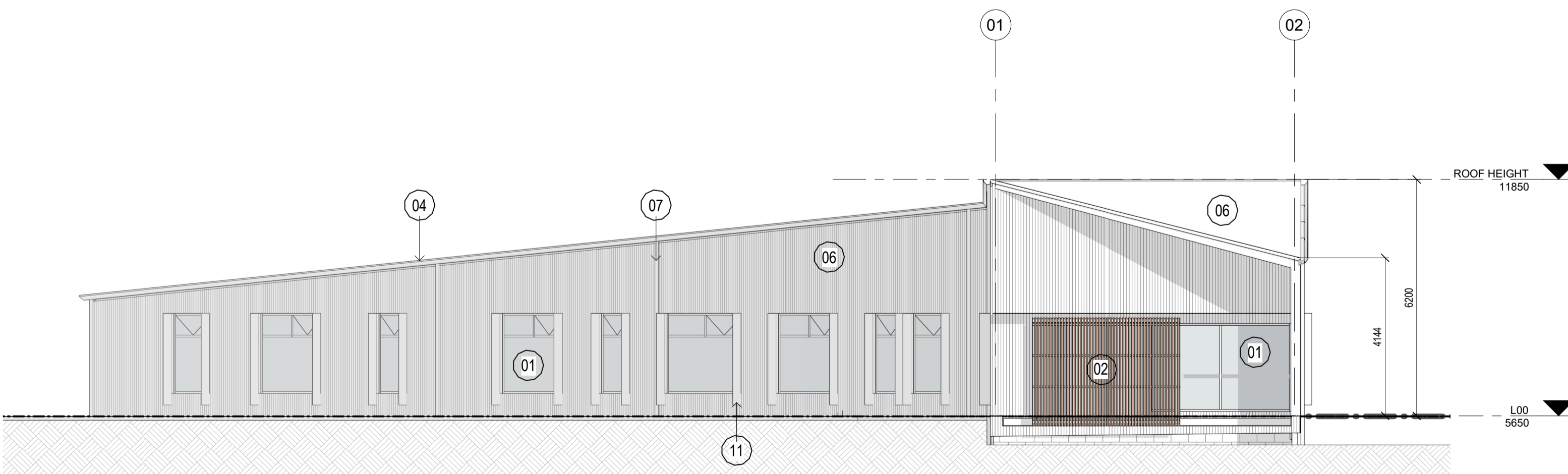
THE DISTANCE BETWEEN THESE MARKS SHOULD MEASURE AS 100mm WHEN SHEET PRINTED TO SCALE AS INDICATED



1 SOUTH ELEVATION - PART 01 - AMENDED DA  
1 : 100



2 SOUTH ELEVATION - PART 02 - AMENDED DA  
1 : 100

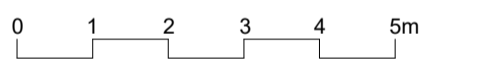


3 WEST ELEVATION - AMENDED DA  
1 : 100

**EXTERNAL MATERIAL SCHEDULE**

- 01 POWDERCOATED ALUMINIUM EXTRUDED FRAME - COLOUR 'COLORBOND MONUMENT'
- 02 VERTICAL TIMBER BATTEN SCREENS - SELECT TIMBER 'BLACK BUTT'
- 03 FOLDED ALUMINIUM FLASHING - COLOUR 'MILL FINISH'
- 04 EAVES GUTTER - COLOUR 'STAINLESS STEEL'
- 05 ALUMINIUM CLADDING - PERMALITE L17 CORRUGATED - COLOUR 'MILL FINISH'
- 06 SELECT TIMBER CLADDING - EAVES SOFFIT - 'BLACK BUTT'
- 07 DOWNPIPE - 'STAINLESS STEEL'
- 08 EXTERNAL PAVING
- 09 EXTERNAL CONCRETE PATH
- 10 SOFT LANDSCAPING - TO FUTURE SELECTION BY LANDSCAPE ARCHITECT
- 11 WINDOW SHROUDS - 6MM ALUMINIUM PLATE - COLOUR 'MILL FINISH'

--- NATURAL GROUND LEVEL  
 - - - PROPOSED FINISHED SURFACE LEVEL - FUTURE LANDSCAPE NOT THIS CONTRACT  
 NOTE: WINDOW SILL 600 FROM L00 TYPICAL



**PhilpLighton Architects**

65 Tamar Street, Launceston, Tasmania 7250  
 T +61 (3) 6331 2133  
 launceston@philplighton.com.au  
 Hobart / Launceston

Accredited Designer: Andrew Floyd CC 43 47 D

Rev	Description	Dwn	Date
1	DEVELOPMENT APPLICATION	KY	11-11-20
2	DEVELOPMENT APPLICATION	KY	17-11-20
3	DEVELOPMENT APPLICATION	KY	18-11-20
4	DA CLARIFICATIONS	KY	15-12-20
5	AMENDED DEVELOPMENT APPLICATION	SS	18 02 2022

Contractor shall verify all dimensions on site before commencing any work or shop drawings.  
 © This drawing is copyright and remains the property of Philp Lighton Architects Pty Ltd

Project  
**UNIVERSITY OF TASMANIA**  
 BAND ROOMS  
 WEST PARK, BURNIE, TAS, 7320

Title  
**ELEVATIONS - SHEET 1**

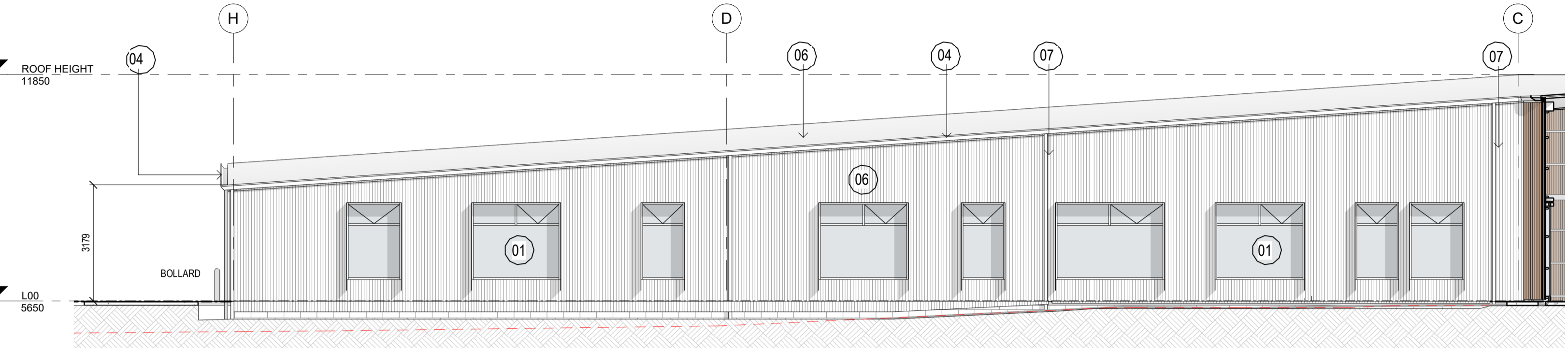
Issue  
**AMENDED DA**

Drawn by	SS	Appr	TF	Project Number
Scale	1 : 100 @ A1	Date	18 02 2022	<b>18.314</b>
Drawing No	1 : 200 @ A3	Rev	DA05	<b>5</b>

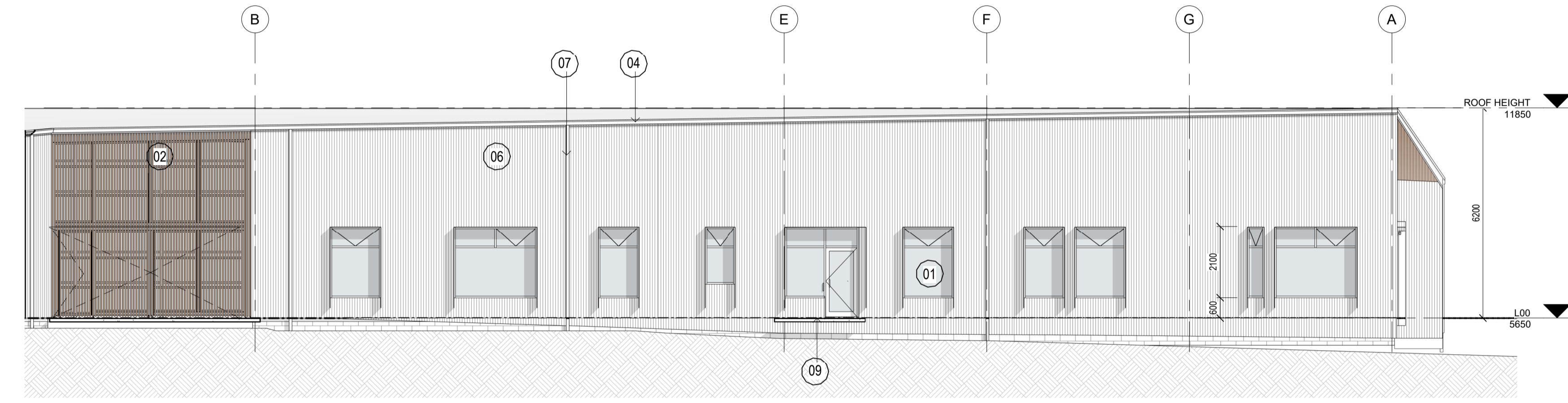
B:\1803\UTAS Band Rooms\18.314 UTAS BAND ROOMS\_CLOUD MODEL\_1.rvt 20/02/2022 10:04:46



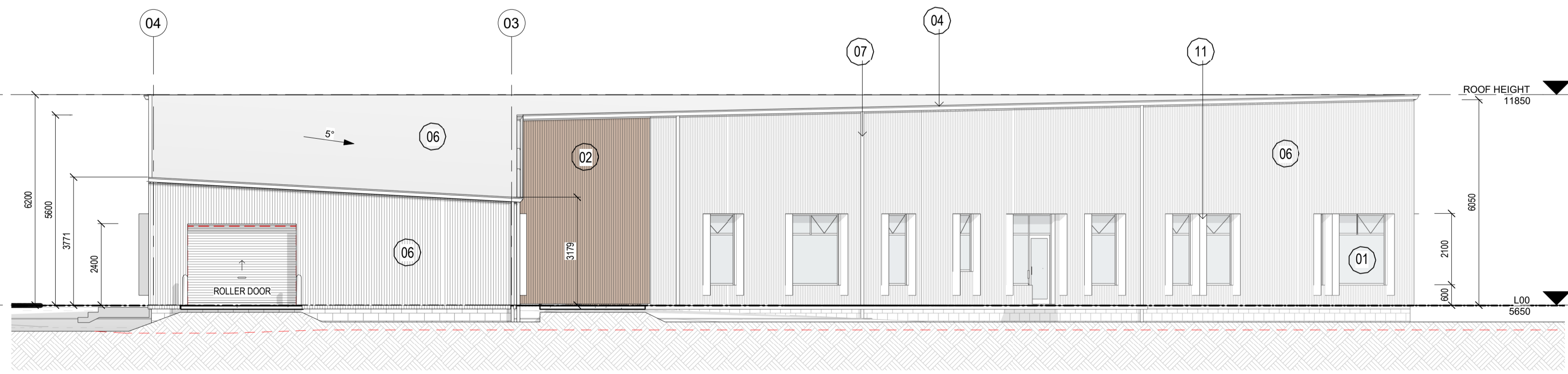
THE DISTANCE BETWEEN THESE MARKS SHOULD MEASURE AS 100mm WHEN SHEET IS PRINTED TO SCALE AS INDICATED



1 NORTH ELEVATION - PART 01 - AMENDED DA  
1:100



2 NORTH ELEVATION - PART 02 - AMENDED DA  
1:100

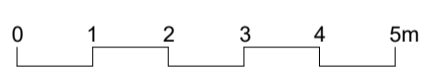


3 EAST ELEVATION - AMENDED DA  
1:100

EXTERNAL MATERIAL SCHEDULE

- 01 POWDERCOATED ALUMINIUM EXTRUDED FRAME - COLOUR 'COLORBOND MONUMENT'
- 02 VERTICAL TIMBER BATTEN SCREENS - SELECT TIMBER 'BLACK BUTT'
- 03 FOLDED ALUMINIUM FLASHING - COLOUR 'MILL FINISH'
- 04 EAVES GUTTER - COLOUR 'STAINLESS STEEL'
- 05 ALUMINIUM CLADDING - PERMALITE LT7 CORRUGATED - COLOUR 'MILL FINISH'
- 06 SELECT TIMBER CLADDING - EAVES SOFFIT - 'BLACK BUTT'
- 07 DOWNPIPE - 'STAINLESS STEEL'
- 08 EXTERNAL PAVING
- 09 EXTERNAL CONCRETE PATH
- 10 SOFT LANDSCAPING - TO FUTURE SELECTION BY LANDSCAPE ARCHITECT
- 11 WINDOW SHROUDS - 6MM ALUMINIUM PLATE - COLOUR 'MILL FINISH'

--- NATURAL GROUND LEVEL  
 --- PROPOSED FINISHED SURFACE LEVEL - FUTURE LANDSCAPE NOT THIS CONTRACT  
 NOTE: WINDOW SILL 600 FROM L00 TYPICAL



PhilpLighton Architects

65 Tamar Street, Launceston, Tasmania 7250  
 T +61 (0) 6331 2133  
 launceston@philplighton.com.au  
 Hobart / Launceston  
 Accredited Designer: Andrew Floyd CC 43 47 D

Rev	Description	Dwn	Date
1	DEVELOPMENT APPLICATION	KY	11-11-20
2	DEVELOPMENT APPLICATION	KY	17-11-20
3	DEVELOPMENT APPLICATION	KY	18-11-20
4	DA CLARIFICATIONS	KY	15-12-20
5	AMENDED DEVELOPMENT APPLICATION	SS	18 02 2022

Contractor shall verify all dimensions on site before commencing any work or shop drawings.  
 © This drawing is copyright and remains the property of Philp Lighton Architects Pty Ltd

Project  
 UNIVERSITY OF TASMANIA  
 BAND ROOMS  
 WEST PARK, BURNIE, TAS, 7320

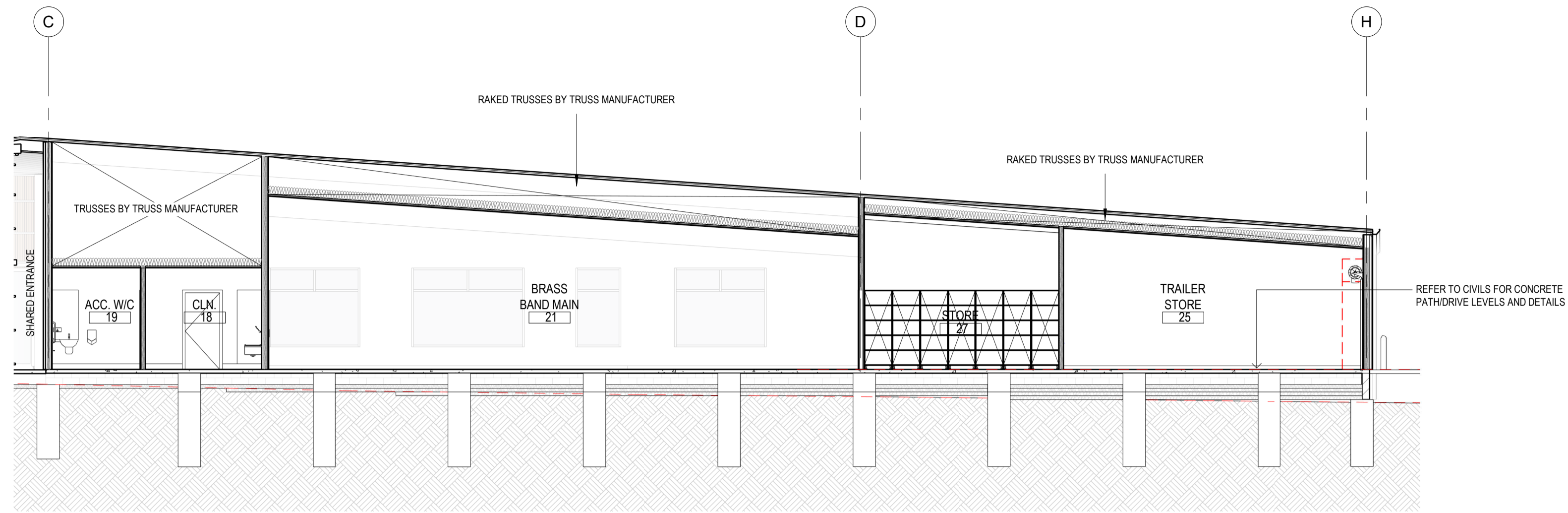
Title  
 ELEVATIONS - SHEET 2

Issue			
AMENDED DA			
Drawn by	SS	Appr	TF
Scale	1:100 @ A1 1:200 @ A3	Date	18 02 2022
Project Number			18.314
Drawing No	DA06	Rev	5

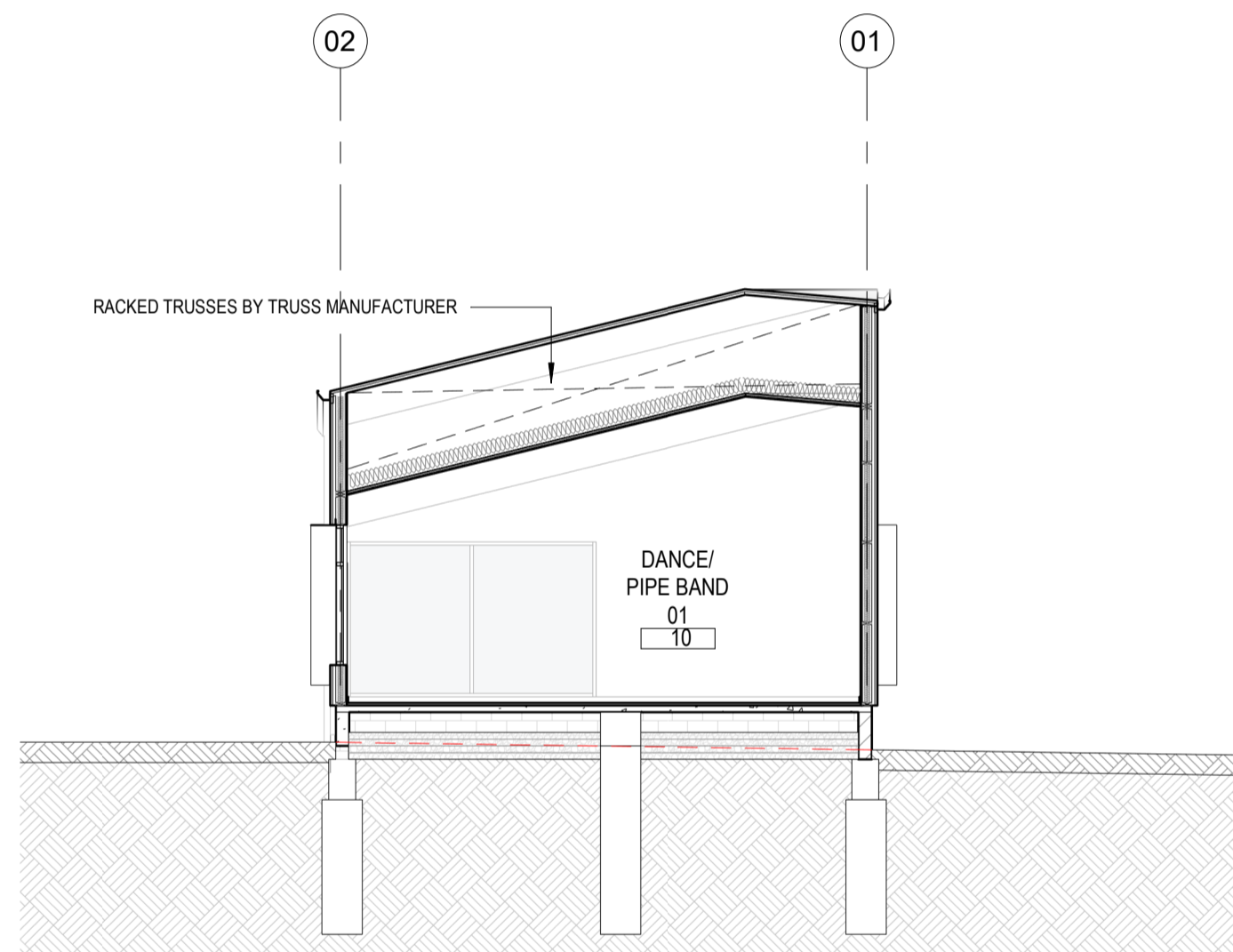
BIM 300 UTAS Band Rooms 18.314 UTAS BAND ROOMS\_CLOUD MODEL\_1.rvt  
 20/02/2022 10:05:46



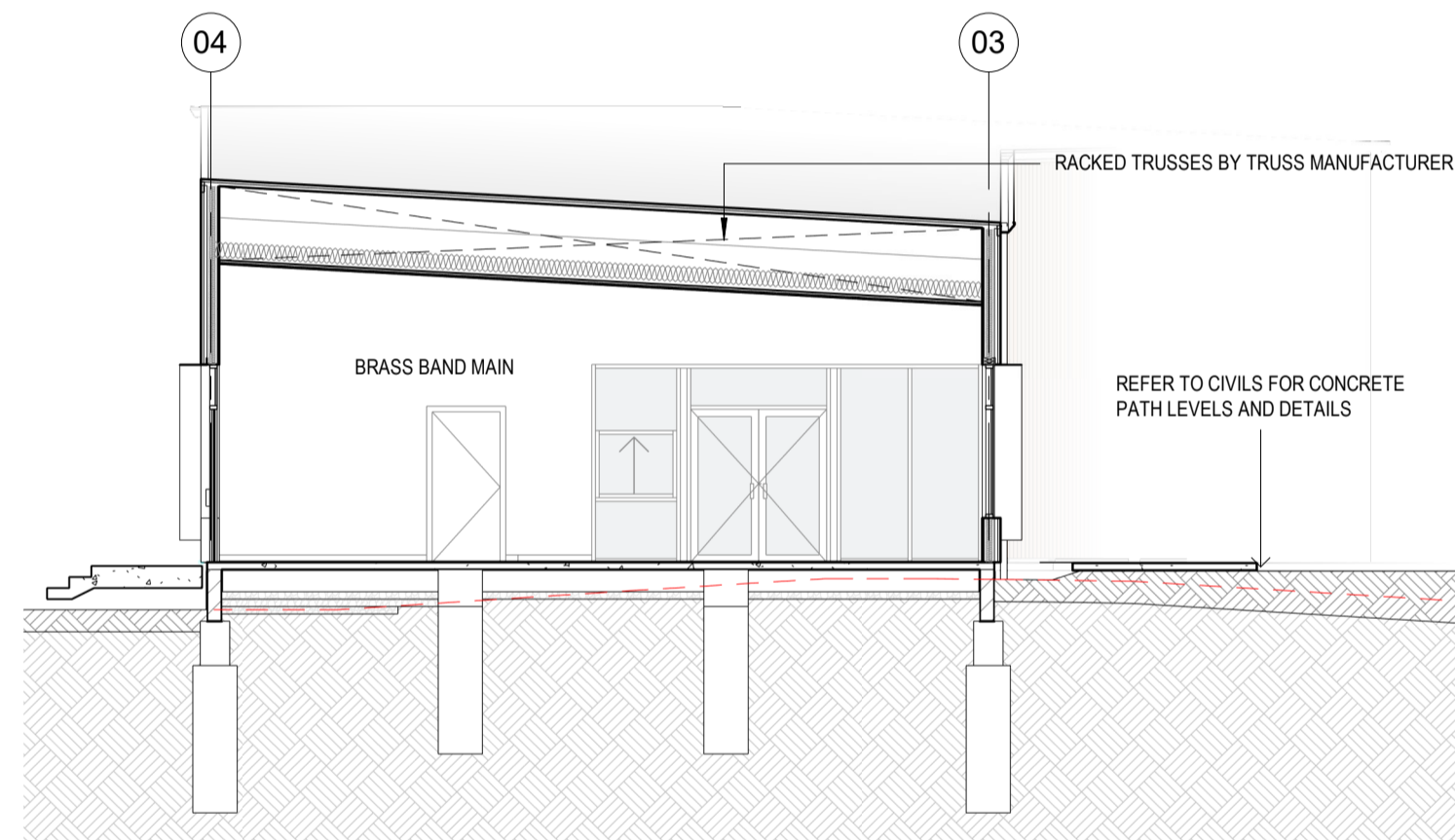
THE DISTANCE BETWEEN THESE MARKS SHOULD MEASURE AS 100mm WHEN SHEET IS PRINTED TO SCALE AS INDICATED



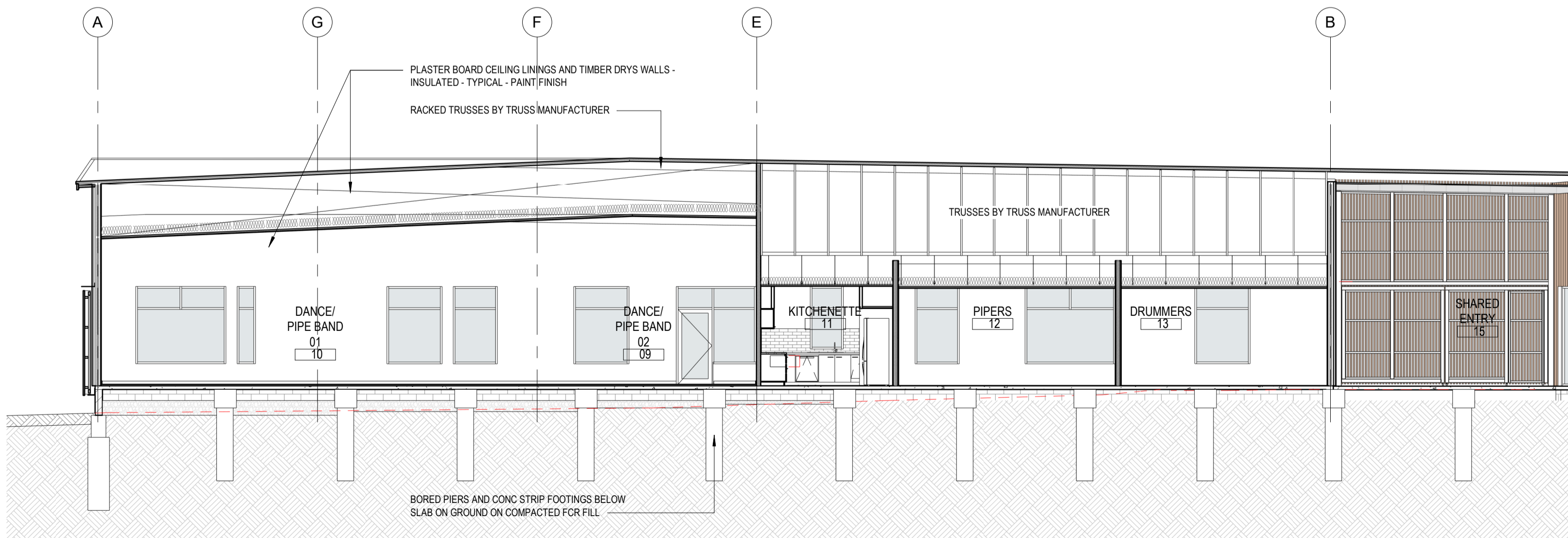
3 Section 3 - AMENDED DA  
1 : 100



2 Section 2 - AMENDED DA  
1 : 100



4 Section 4 - AMENDED DA  
1 : 100



1 Section 1 - AMENDED DA  
1 : 100

0 1 2 3 4 5m

PhilpLighton Architects

65 Tamar Street, Launceston, Tasmania 7250  
T +61 (3) 6331 2133  
launceston@philplighton.com.au  
Hobart / Launceston

Accredited Designer: Andrew Floyd CC 43 47 D

Rev	Description	Dwn	Date
1	DEVELOPMENT APPLICATION	KY	11-11-20
2	DEVELOPMENT APPLICATION	KY	17-11-20
3	DEVELOPMENT APPLICATION	KY	18-11-20
4	DA CLARIFICATIONS	KY	15-12-20
5	AMENDED DEVELOPMENT APPLICATION	SS	18 02 2022

Contractor shall verify all dimensions on site before commencing any work or shop drawings.  
© This drawing is copyright and remains the property of Philp Lighton Architects Pty Ltd

Project  
UNIVERSITY OF TASMANIA  
BAND ROOMS  
WEST PARK, BURNIE, TAS, 7320

Title  
SECTIONS

Issue  
AMENDED DA

Drawn by	SS	Appr	TF	Project Number
Scale		Date		18.314
	1 : 200 @ A3		18 02 2022	
Drawing No	DA07	Rev		5

B:\2022\UTAS Band Rooms\18.314 UTAS BAND ROOMS\_CLOUD MODEL.rvt  
20/02/2022 10:45:44 PM